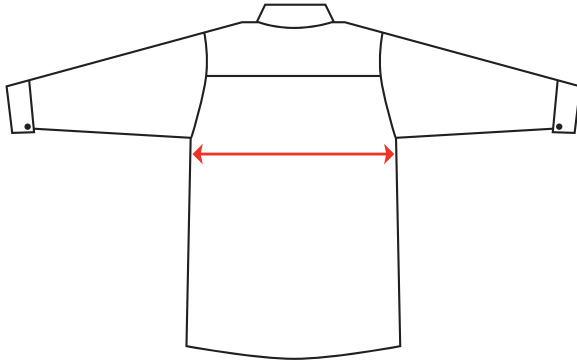
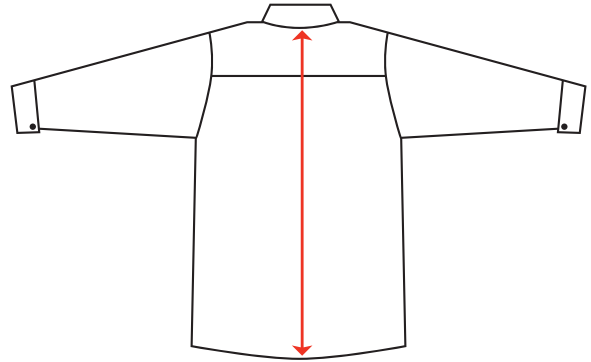


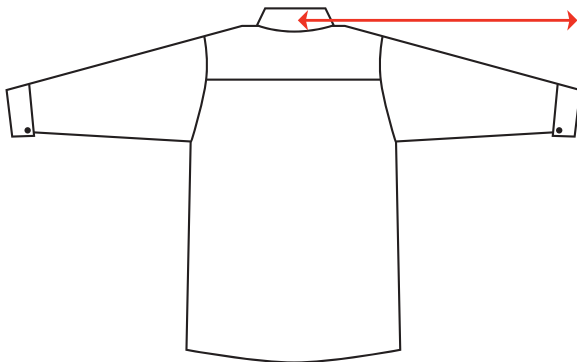
# MEASURING POINTS



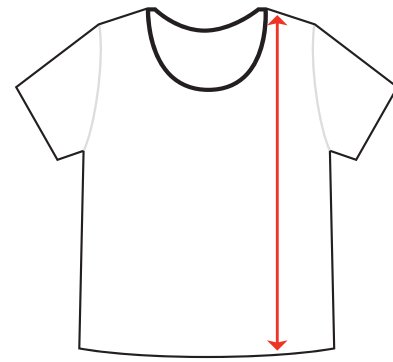
1) - 1" Under armhole, seam to seam



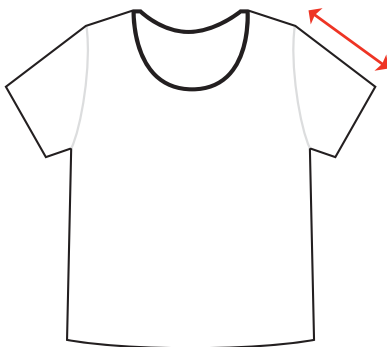
2) Center Back Length (CBL)  
Center of back, from neck seam to bottom of hem.



3) Center Back (CB) Sleeve Length –  
Find center point of back by finding the ½ way point between shoulders. Measure across the shoulder, then down along the sleeve.



4) Center Front Length (CFL) from High Point of Shoulder (HPS) –  
Front highest point on the shoulder (NOT THE COLLAR), to the bottom hem.



5) Sleeve Length from Shoulder – From top seam of sleeve to end of hem.

